

Manual for updates

UNEEG EpiSight Analyzer light

Version number 2.4

This version of UNEEG EpiSight Analyzer
is not a medical device. It is intended for
research and evaluation only.



Manufacturer:

AIT - Austrian Institute of Technology GmbH;
Giefinggasse 4; 1210 Vienna; Austria

Date of manufacture: 2025



Caution: Please read paragraphs marked with this symbol carefully as they contain important safety information.



This version of UNEEG EpiSight Analyzer is not a medical device. It is intended for research and evaluation, only.



This version of UNEEG EpiSight Analyzer must not be used on patients.

Issuing date of this document:
2025-03

Installing a new version of UNEEG EpiSight Analyzer

Before you install the new version of UNEEG EpiSight Analyzer, you must make sure that the currently installed version is removed first. Moreover, you will need to migrate the existing database to a new version. For this, follow the steps described below, depending on your existing setup (i.e., whether it is a local or network storage installation).

Local storage - Accessible by one user at a time (standalone installation)

1) Uninstall the previous version of UNEEG EpiSight Analyzer

- a. In Add or remove programs, search for UNEEG EpiSight Analyzer and select Uninstall.

2) Install the new version of UNEEG EpiSight Analyzer

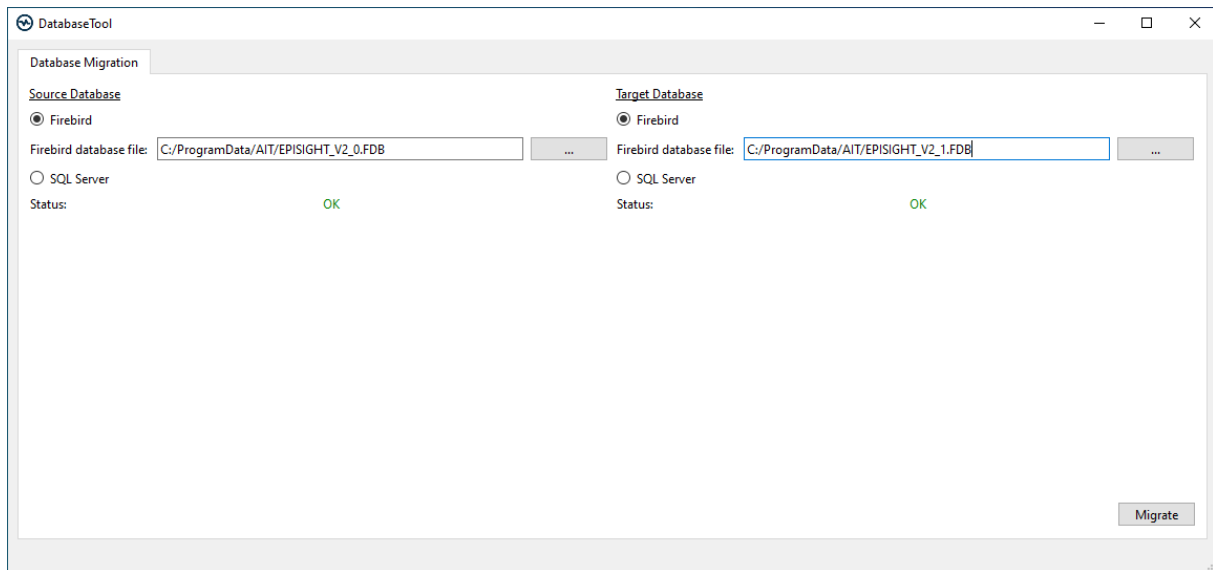
- a. Download the installer of UNEEG EpiSight Analyzer from the provided link, unzip it and execute the extracted installer. The installer will guide you through the installation process. When asked for including a license, select No (you already have a license from the previous installation). Do not open the program yet.

3) Migrate the old Firebird database to the new one

- a. In Windows Explorer, go to the installation folder (by default is C:\Program Files\UNEEG EpiSight Analyzer) and open the program DatabaseToolApp
 - i. Select the source as Firebird, and select the current database you are using (the old one from version for example X.Y, which by default is C:\ProgramData\AIT\EPISIGHT_VX_Y.FDB).
 - ii. Based on the Firebird version, you will be automatically prompted by a window for an ODS update. Click Yes. (this is an optional step and does not occur on every firebird update depending on the version. If it pops not up continue with the next step.)
 - iii. Select the target as Firebird, and indicate the name of the new database (we recommend using C:\ProgramData\AIT\EPISIGHT_VY_X+1.FDB)
 - If both status say OK migration is possible otherwise make sure the correct databases are inserted, empty and the databases are reachable for the current user.

UNEEG EpiSight Analyzer

iv. Select *Migrate* to migrate the database.



v. A confirmation window will pop up. Press OK.

4) Process completed

- a. You can now close the DatabaseToolApp and open UNEEG EpiSight Analyzer.

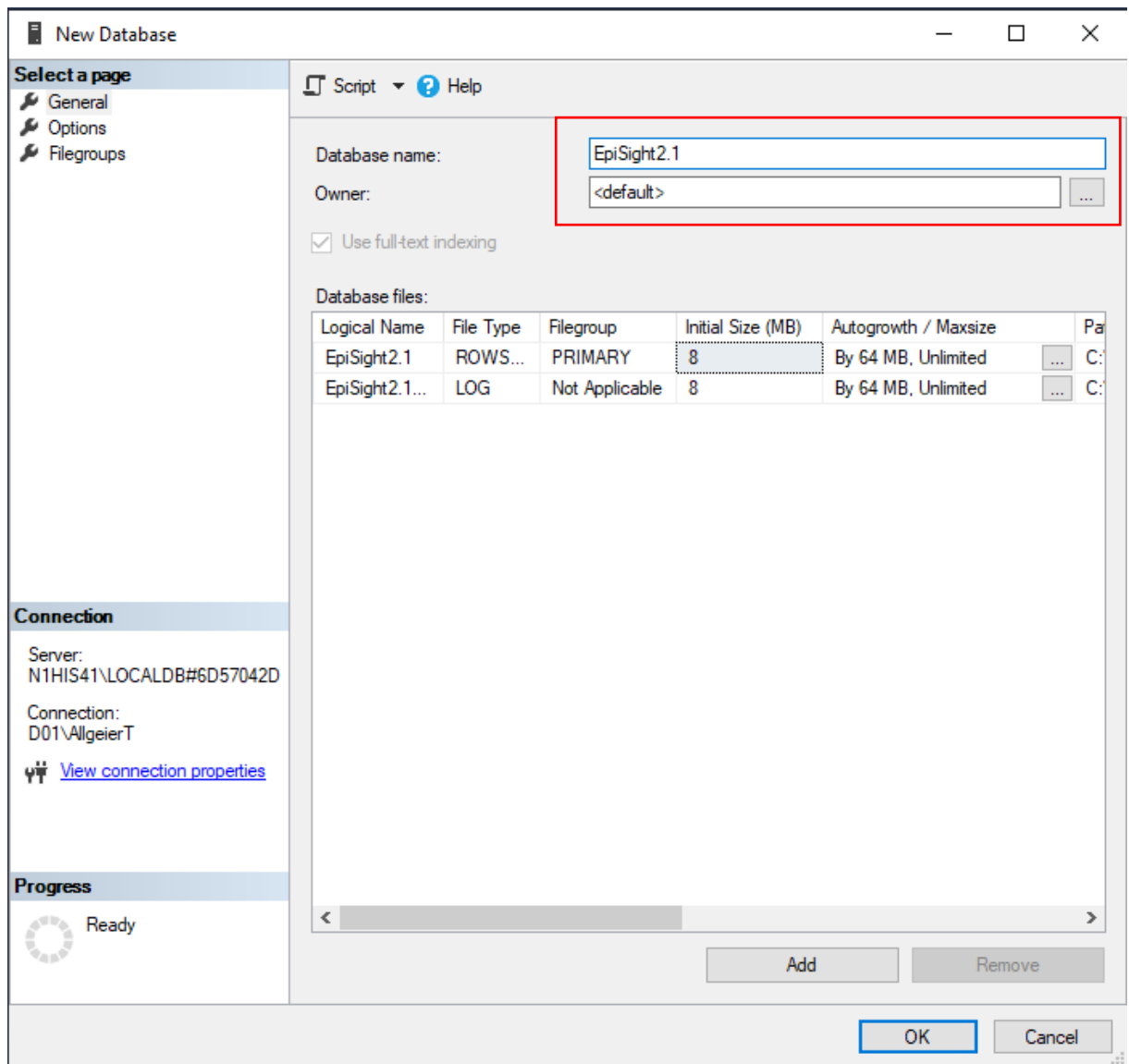
Network storage - Accessible by multiple users simultaneously (server installation)

Server machine

FOR ADMINISTRATORS ONLY

- 1) **Create a new SQL database for UNEEG EpiSight Analyzer VX.Y (current version)**
 - a. Open SQL Server Management Studio (SSMS), right click on Database > New Database. Create a database called EpiSightX.Y and indicate the owner (normally, it would be the SQL user created for this purpose during the first installation of the system) or the user(s) based on Windows Active Directory.

UNEEG EpiSight Analyzer



- b. Once you create the database, keep a record of the access credentials: database name, owner credentials (username, password), and server name (or IP address + port). These will be required by any client who wants to connect to the new database (see step 5).

2) Uninstall the previous version of UNEEG EpiSight Analyzer

- a. In Add or remove programs, search for UNEEG EpiSight Analyzer and select Uninstall.

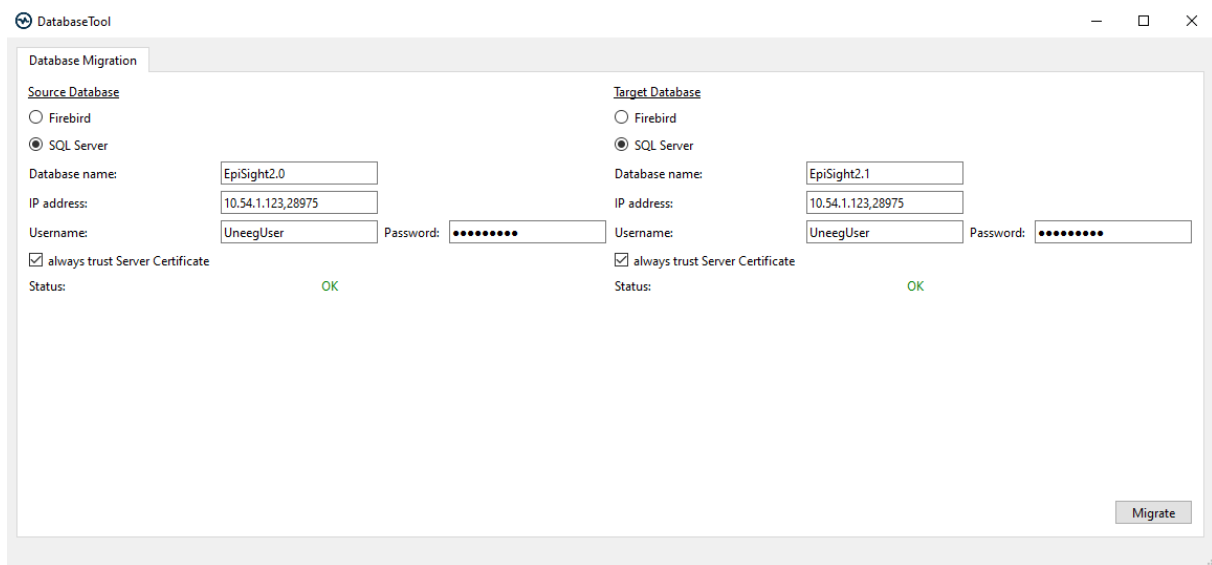
3) Install new version UNEEG EpiSight Analyzer

- a. Download the installer of UNEEG EpiSight Analyzer, unzip it and execute the extracted installer. The installer will guide you through the installation process.
 - i. When asked for including license, select No (you already have a license from the previous installation).

4) Migrate the old SQL database to the new one

- a. Navigate to the UNEEG EpiSight Analyzer installation folder (by default is C:\Program Files\UNEEG EpiSight Analyzer) and run the application DatabaseToolApp. This will help you migrate the old SQL database to the new one created in step 1.
 - i. Select the source as SQL Server and insert the details of the former database
 1. Database name: enter the name of the former database (in this example, EpiSight2.0).
 2. IP address: enter the name of the SQL server. This can be copied from SSMS, in Server Properties (in this example, UNEEG-SRV01\SQLEXPRESS). Alternatively, you can insert it in the form of "IP, port", e.g., 10.54.1.123,28975.
 3. Username/Password: enter the username and password for the SQL owner of the former database.
- b. Select the target as SQL Server and indicate the details of the new database that you have created in step 1.
- c. Check the boxes for *always trust Server Certificate*.
 - If both status say OK migration is possible otherwise make sure the correct databases are inserted, empty and the databases are reachable for the current user.
- d. Select *Migrate* to migrate the database.

UNEEG EpiSight Analyzer



5) Configure the EpiSight database with the EpiSight Server Admin tool

- a. Navigate to the UNEEG EpiSight Analyzer installation folder (by default, C:\Program Files\UNEEG EpiSight Analyzer) and run the application EpiSight Server Admin.exe. This will set up the connections to the created database in step 1 and to UNEEG ProConnect.
- b. Select Stop Server.
- c. Insert the SQL database details created in step 1 (Step 1 of 3):
 - i. Select SQL Server over ODBC
 - ii. Database name: enter the database name created in step 1 (in this example, EpiSight2_1).
 - iii. ODBC Object: enter the name of the SQL server (in this example, UNEEG-SRV01\SQLEXPRESS). Alternatively, you can insert it in the form of "IP, port" (in this example, 10.54.1.123,28975).
 - iv. Username/Password: enter the username and password for the SQL user. This corresponds to the credentials of the selected database owner in step 1.
- Normally, the user credentials would be the same as the ones created when v2.0 was installed. If the specific Windows user was also added in the SQL server in step 1 and the settings of the respective Windows account allow it, it could be also possible to use Windows authentication.
 - v. Check the box for always trust Server Certificate.
 - vi. Press Next.

UNEEG EpiSight Analyzer

EpiSight Server Admin

Step 1 of 3

Database settings

Database name:

ODBC Object:

Username: Password:

☒ Always trust server certificate

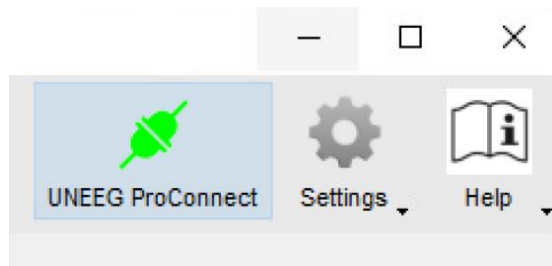
☐ Use Windows authentication

UDI UDI-DI (01)09120109830276 UDI-PI Software Version (8012)2.3.0-3b6f128(M)

- d. Calculation server configuration (Step 2 of 3)
 - i. Make sure the option Set this server as calculation server is selected and Press Next.
- e. Configure the connection to UNEEG ProConnect (Step 3 of 3)
 - i. Under EpiSight server
 - IP address: enter https://localhost. The installer might translate to the real IP address of the machine.
 - Port: enter 8443
 - ii. Under UNEEG ProConnect
 - UNEEG hostname: enter https://localhost. The installer might translate to the real IP address of the machine.
 - Port: 443

UNEEG EpiSight Analyzer

- File location: enter the same file path where the EEG data in EDFe format were saved in the previous version (in this example, Z:\UNEEGData\).
- iii. Press Run Server. By selecting Run Server, the EpiSight Server Admin will start. If the EpiSight Server Admin tool is not already running with administrator rights, you will be prompted to provide admin credentials.
- iv. You can verify that EpiSight Server Admin has started by checking that the following processes are running: CalculationManager.exe, HTTPFileManager.exe and Watchdog.exe.
- v. You can also open the client application (UNEEG EpiSight Analyzer) and confirm that the UNEEG ProConnect icon is green

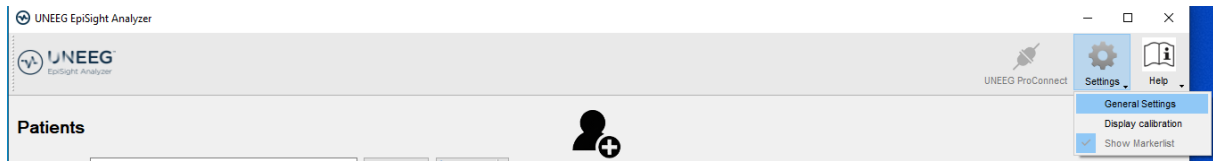


The server machine is now updated. You can close the EpiSight Serve Admin and the client application windows. If the installation has one or more clients that can access the database, you must proceed with the instructions described in next section.

Client machine(s)

- 6) Uninstall the previous version of UNEEG EpiSight Analyzer in the additional client machine(s)
 - a. In Add or remove programs, search for UNEEG EpiSight Analyzer and select Uninstall.
- 7) Install UNEEG EpiSight Analyzer in the additional client machine(s) and configure the database settings
 - a. Download the installer of UNEEG EpiSight Analyzer, unzip it and execute the extracted installer. The installer will guide you through the installation process.
 - i. When asked for inserting license details, Select No.
 - b. Open UNEEG EpiSight Analyzer and go to Settings > General Settings

UNEEG EpiSight Analyzer



- c. Under EpiSight database, select Network storage – Access by multiple users simultaneously, and insert the SQL database details created in step 1: (If you are a regular user, contact your local IT administrator to get the right settings.)
 - i. Select SQL Server over ODBC
 - ii. Database name: enter the database name created in step 1 (in this example, EpiSight2.1).
 - iii. ODBC Object: enter the name of the SQL server (in this example, UNEEG-SRV01\SQLEXPRESS). Alternatively, you can insert it in the form of “IP, port”, (in this example, 10.54.1.123,28975).
 - iv. Username/Password: enter the username and password for the SQL user. This corresponds to the credentials of the selected database owner in step 1.
 - Normally, the user credentials would be the same as the ones created when the earlier version was installed. If the specific Windows user was also added in the SQL server in step 1 and the settings of the respective Windows account allow it, it could be also possible to use Windows authentication.
 - v. Check the box for always trust Server Certificate.
 - vi. Press Save.

UNEEG EpiSight Analyzer

Settings

Marker types | EpiSight database | Language | Page scrolling | General

Select where EpiSight should store your markers and the results of EpiSight analysis.

☐ Local storage - Access by one user at a time

Firebird database file: C:/ProgramData/AIT/EPISIGHT_V2_3.FDB

☒ Network storage - Access by multiple users simultaneously

Database name: EpiSight2_3

ODBC Object: 10.54.1.123,28975

Username: UnelegUser Password:

☒ Always trust server certificate

☐ Use Windows authentication

Notice:
Changes in these settings will only be applied when restarting EpiSight.

Save Cancel

vii. Close the program and start it again after a few seconds.

8) Process completed